



NORTHWEST FLORIDA  
STATE COLLEGE

# SCHEMATIC DESIGN

FEBRUARY 14, 2023

WILLIAMS BLACKSTOCK ARCHITECTS

Accelerator	10,900 SF
SCHS Classroom Building	29,000 SF
NWFSC Classroom Building	28,100 SF
<b>Total (Phase 1):</b>	<b>68,000 SF</b>

SCHS Phase 2 Classrooms	15,000 SF
<b>Total (Phase 1 + 2):</b>	<b>83,000 SF</b>



As of 02/23/2023, this is for future review and approval

Common Spaces (Accelerator / Dining)

- 1 x Entry Lobby / Pre-function Space @ 1100 NSF
- 1 x Café Bistro / Café @ 450 NSF
- 1 x Great Hall / 200-Seat Multipurpose Room (w/ storage) @ 2500 NSF
- 1 x 50-75 Seat Multi-Purpose Room (w/storage) @ 1000 NSF
- 1 x Esports Arena @ 300 NSF
- Office Space @ 500 NSF
- 2<sup>nd</sup> Floor Common Space @ 750 NSF
- 1 x 12-seat Conference Room @ 300 NSF

Total NSF = 6,900 SF / Total GSF = 10,900 SF

**Classroom & Lab Spaces**

- 10 x 24-Seat Classrooms (Flat / Flexible) @ 810 NSF (each)
- 1 x 20-Seat Science Lab w/ Storage @ 1600 NSF

**Common Spaces (General)**

- 1 x Lobby Commons / Entry Lobby @ 1750 NSF (~550 NSF, TYP. FLOOR)
- 260 x Lockers (12" Wide, Stacked) @ 700 NSF (total)

**Admin Spaces**

- Admin Offices and Support @ 1500 NSF (~500 NSF, TYP. FLOOR)
- Reception, Workrooms, Breakroom @ 500 NSF
- 1 x Clinic and Support Space @ 250 NSF
- 1 x Conference Room (15 Seats) @480 NSF
- 2 x Faculty Restrooms @ 70 NSF (each)

Total NSF = 15,020 SF / Total GSF = 29,000 SF



Classroom & Lab Spaces

- 2 x 35-Seat Classrooms (Flat / Flexible) @ 875 NSF (each)
- 2 x 30-Seat Computer Labs @ 1150 NSF (each)
- 1 x 24-Seat Science Lab w/ Storage @ 2100 NSF
- 1 x Testing Center (30-Seats) and Entry Area @ 1200 NSF

Learning Commons / Common Space

- 1 x Learning Commons @ 1150 NSF
- 1 x Writing / Technology Lab (20-Seats) @ 465 NSF
- 1 x Math Lab (20-Seats) @ 465 NSF
- 4 x Study Team Rooms (Level 3) @ 120 NSF (each)
- 2 x Open Study Space (Level 1 & 2) @ 500 NSF (each)

Admin Spaces

- 9 x Admin Offices @ ~120 NSF (each)
- 1 x Reception Area and Open Workstation / Collaboration Space @ 1020 NSF
- 1 x Faculty Workroom / Storage @ 300 NSF
- 1 x Conference Room (12 Seats) @ 300 NSF

Total NSF = 13,610 SF / Total GSF = 28,100 SF



**Parking Requirements (per SREF)**

**Existing SCHS/ NWFSC Building**

108 Classroom Seats (Exist.) (1:10*)	11
+ Visitor Spaces (Exist.) (1:100)	2
6 Faculty / Admin (Exist.) (1:1)	6

\* NWFSC Classrooms used by SCHS 11-12<sup>th</sup> Grade

19 Total Parking Spaces

**Required = 19 Parking Spaces**

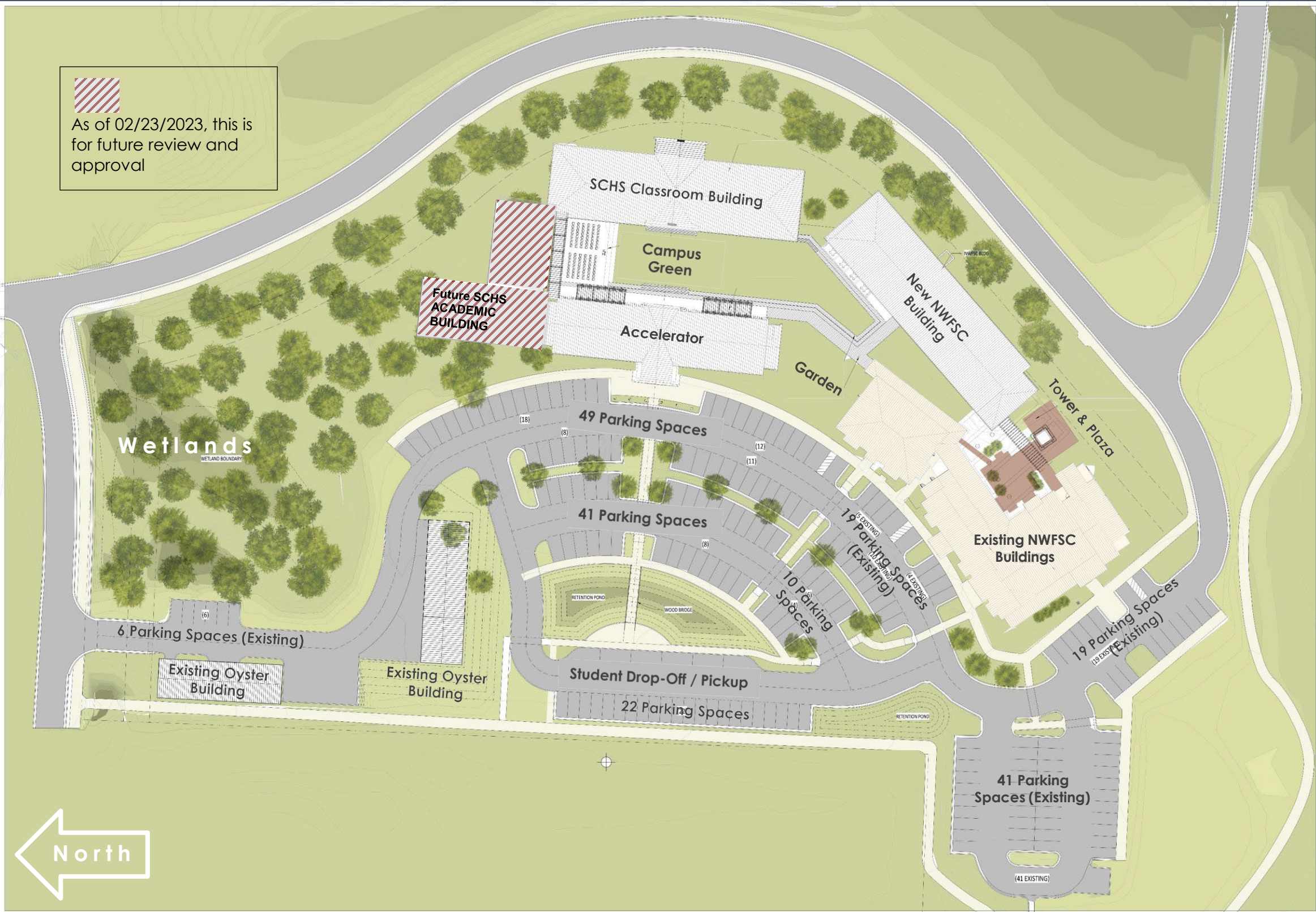
**Total Existing = 109 Parking Spaces**



SITE OVERVIEW / STRATEGY

PROPOSED SITE PLAN – PARKING

As of 02/23/2023, this is for future review and approval



Parking Requirements (per SREF)

Existing SCHS/ NWFS Building

108 Classroom Seats (Exist.) (1:10*)	11
+ Visitor Spaces (Exist.) (1:100)	2
6 Faculty / Admin (Exist.) (1:1)	6

\* NWFS Classrooms used by SCHS 11-12<sup>th</sup> Grade

19 Total Parking Spaces

SCHS Classroom / Accelerator

264 Classroom Seats (0*)	0
+ Visitor Spaces (Exist.) (1:100)	3
10 Faculty / Admin (1:1)	10

\*\* No parking required for 9-10<sup>th</sup> Grade

13 Total Parking Spaces

NWFS Classroom / Commons

224 Classroom Seats (New) (1:2)	112
14 Faculty / Admin (New) (1:1)	14

126 Total Parking Spaces

SCHS Phase 2 – Classroom Building

216 Classroom Seats (1:10)	22
+ Visitor Spaces (1:100)	3

25 Total Parking Spaces

Required = 183 Parking Spaces

Total Provided = 207 Parking Spaces



# SITE OVERVIEW / STRATEGY

# SITE ANALYSIS & STRATEGIES



WILLIAMS BLACKSTOCK ARCHITECTS





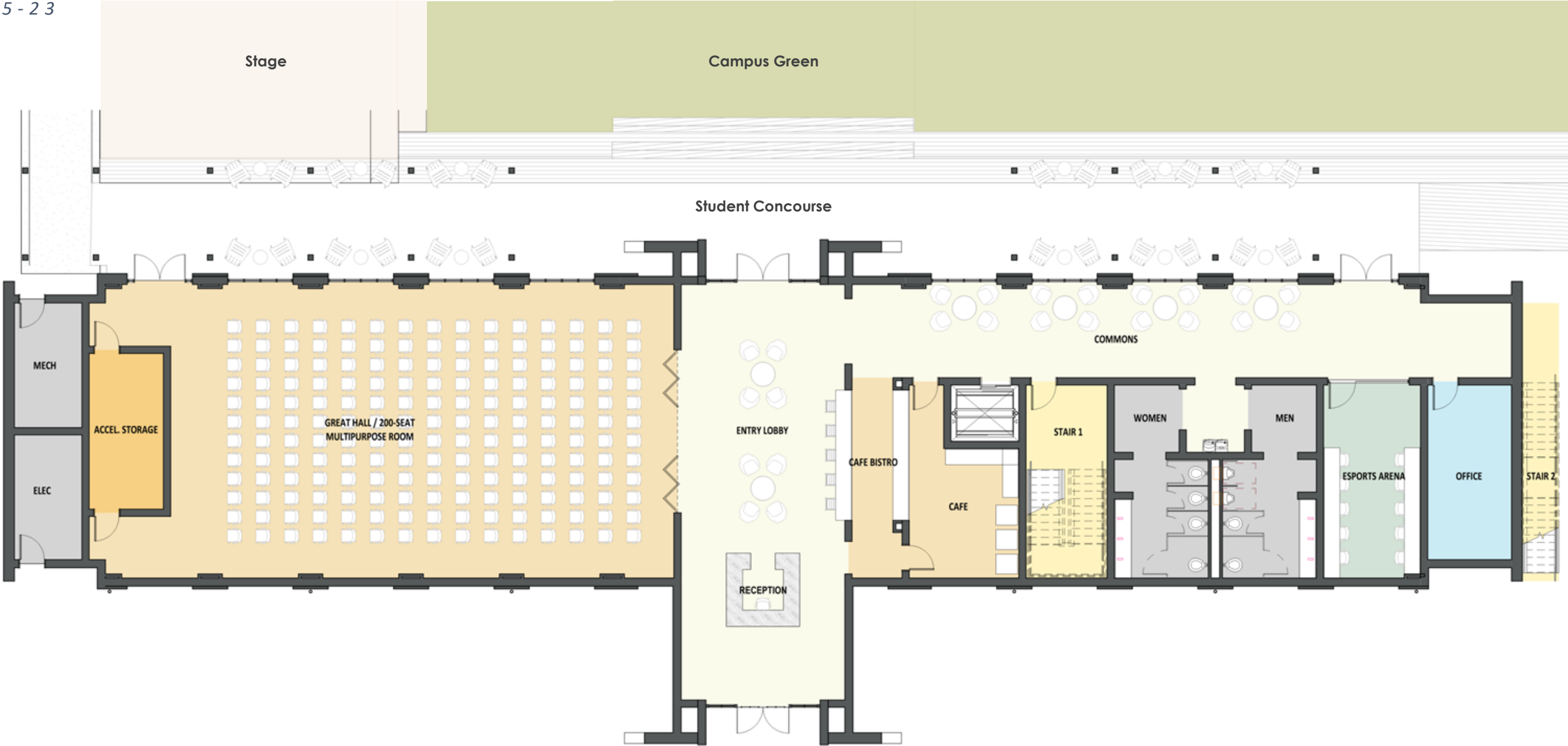


**ACCELERATOR - 300 SEATS TOTAL**

**TOTAL SEATS (ASSEMBLY SPACES + CONFERENCE ROOM + ESPORTS)**

**LEVEL 1**

01-25-23

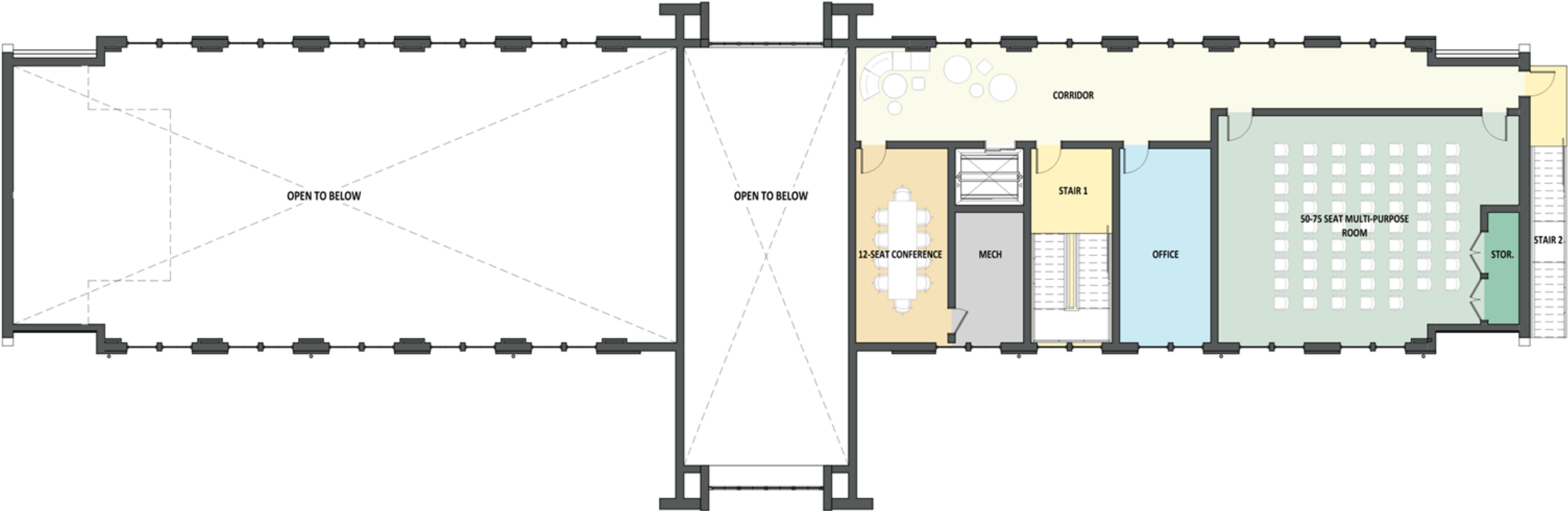


**ACCELERATOR - 300 SEATS TOTAL**

**TOTAL SEATS (ASSEMBLY SPACES + CONFERENCE ROOM + ESPORTS)**

**LEVEL 2**

01-25-23





# ELEVATIONS

## SCHS CLASSROOM BLDG – GREENSPACE ELEVATION



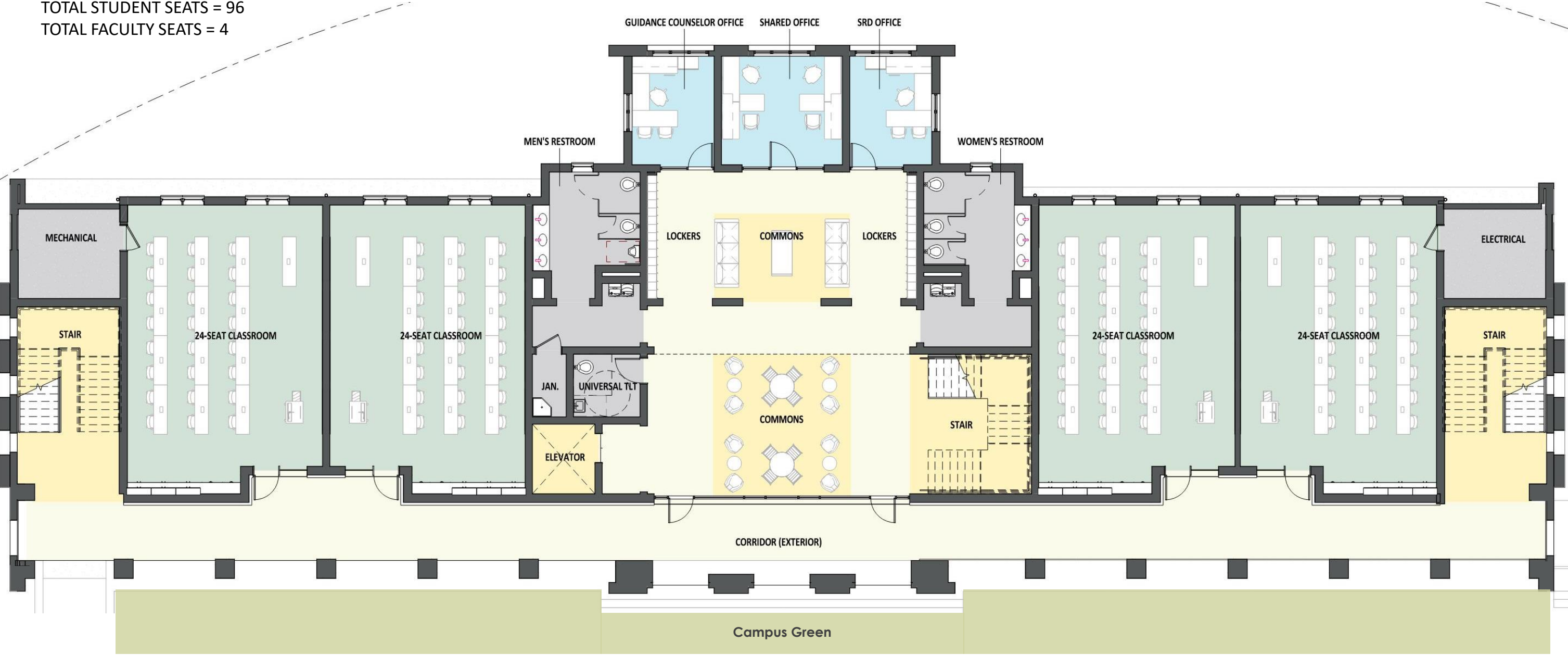
WILLIAMS BLACKSTOCK ARCHITECTS

# FLOOR PLANS & ELEVATIONS

# SCHS CLASSROOM BUILDING – LEVEL 1

**SCHS - 271 SEATS TOTAL**  
**TOTAL STUDENT SEATS = 264**  
**TOTAL FACULTY SEATS = 7**

**LEVEL 1 - TOTAL SEATS = 100**  
**TOTAL STUDENT SEATS = 96**  
**TOTAL FACULTY SEATS = 4**



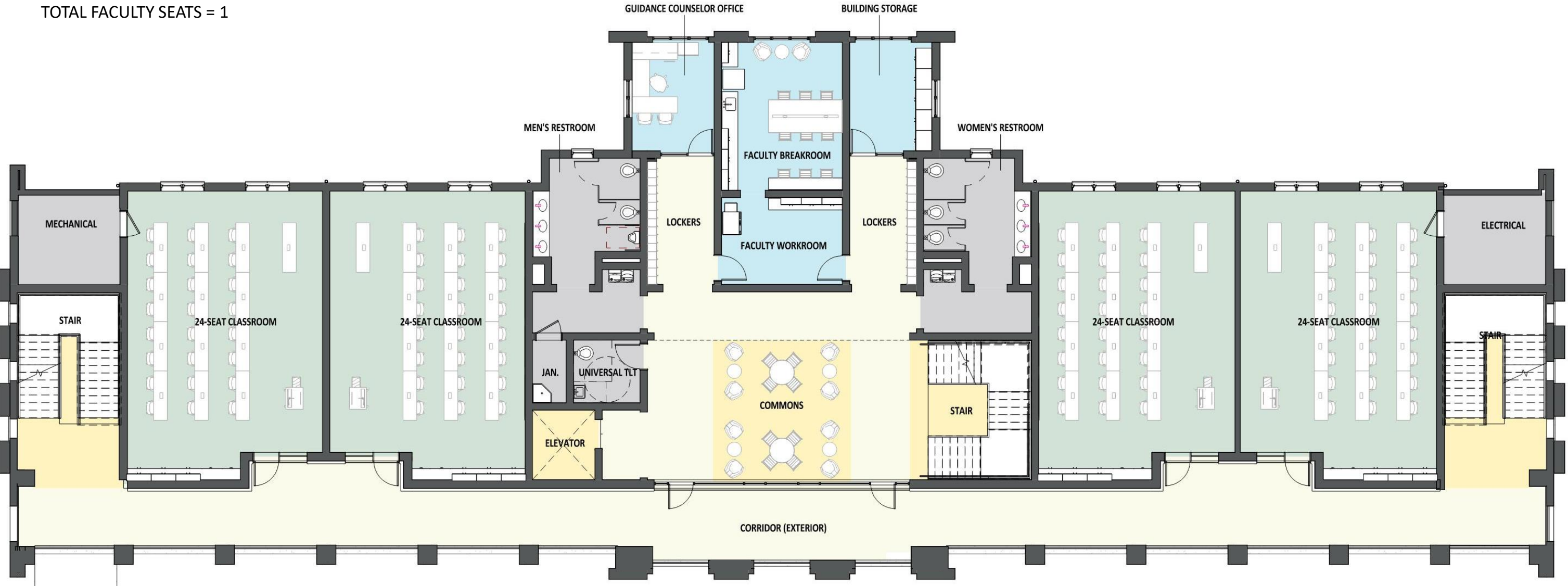


# FLOOR PLANS & ELEVATIONS

# SCHS CLASSROOM BUILDING – LEVEL 2

**SCHS - 271 SEATS TOTAL**  
**TOTAL STUDENT SEATS = 264**  
**TOTAL FACULTY SEATS = 7**

LEVEL 2 - TOTAL SEATS = 97  
TOTAL STUDENT SEATS = 96  
TOTAL FACULTY SEATS = 1

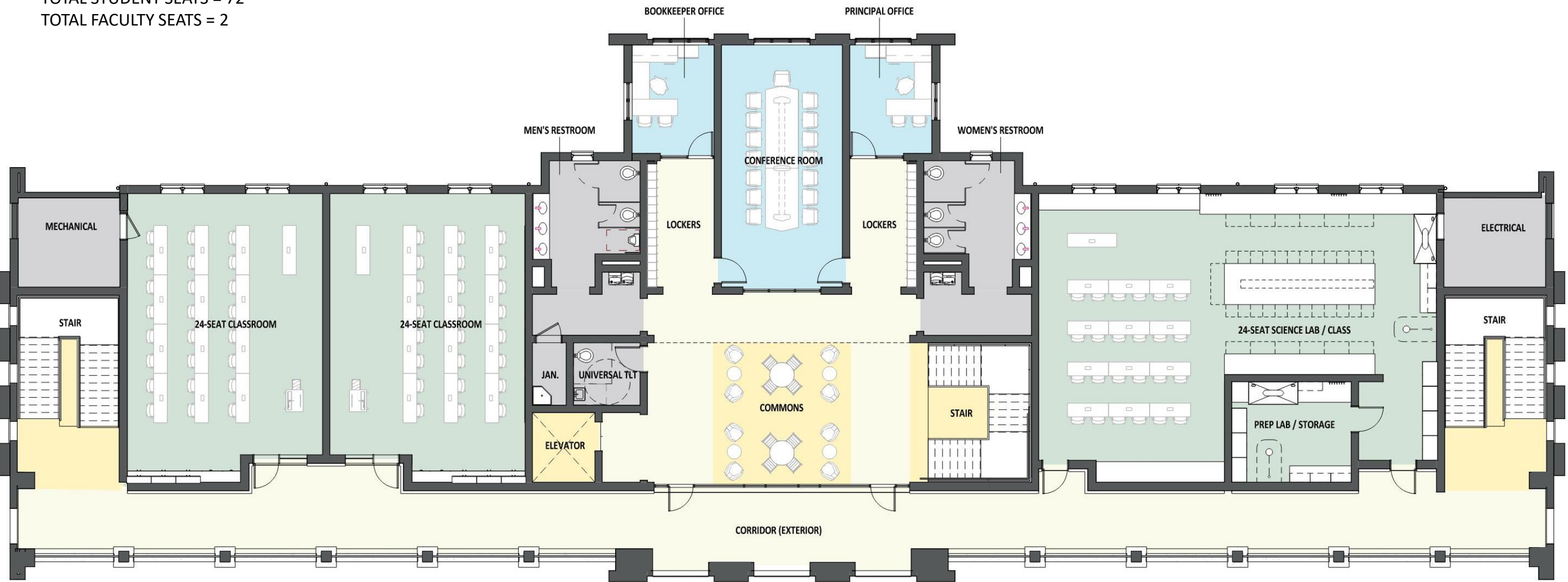


# FLOOR PLANS & ELEVATIONS

# SCHS CLASSROOM BUILDING – LEVEL 3

**SCHS - 271 SEATS TOTAL**  
**TOTAL STUDENT SEATS = 264**  
**TOTAL FACULTY SEATS = 7**

**LEVEL 3 - TOTAL SEATS = 74**  
**TOTAL STUDENT SEATS = 72**  
**TOTAL FACULTY SEATS = 2**







# FLOOR PLANS & ELEVATIONS

## NWFSC BUILDING – LEVEL 1

### NWFSC - 238 SEATS TOTAL

TOTAL STUDENT SEATS = 224

TOTAL FACULTY SEATS = 14

LEVEL 1 - TOTAL SEATS = 44

TOTAL STUDENT SEATS = 30

TOTAL FACULTY SEATS = 14



# FLOOR PLANS & ELEVATIONS

# NWFSC BUILDING – LEVEL 2

**NWFSC - 238 SEATS TOTAL**

**TOTAL STUDENT SEATS = 224**

**TOTAL FACULTY SEATS = 14**

LEVEL 2 - TOTAL SEATS = 105

TOTAL STUDENT SEATS = 105

TOTAL FACULTY SEATS = 0





# FLOOR PLANS & ELEVATIONS

# NWFSC BUILDING – LEVEL 3

## NWFSC - 238 SEATS TOTAL

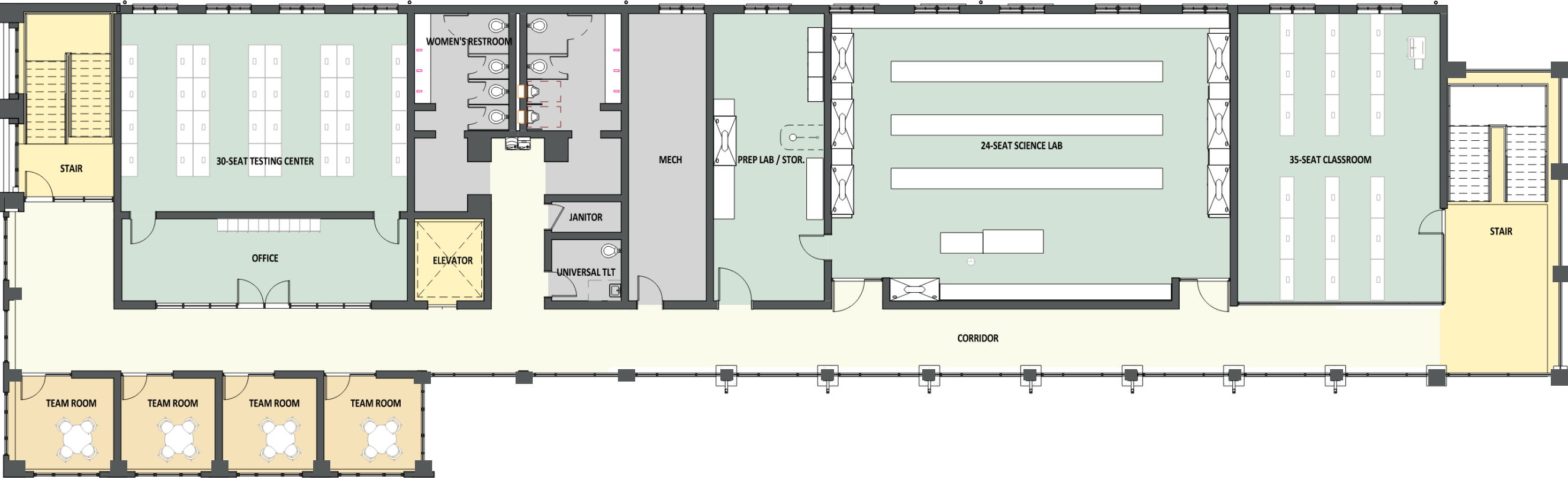
TOTAL STUDENT SEATS = 224

TOTAL FACULTY SEATS = 14

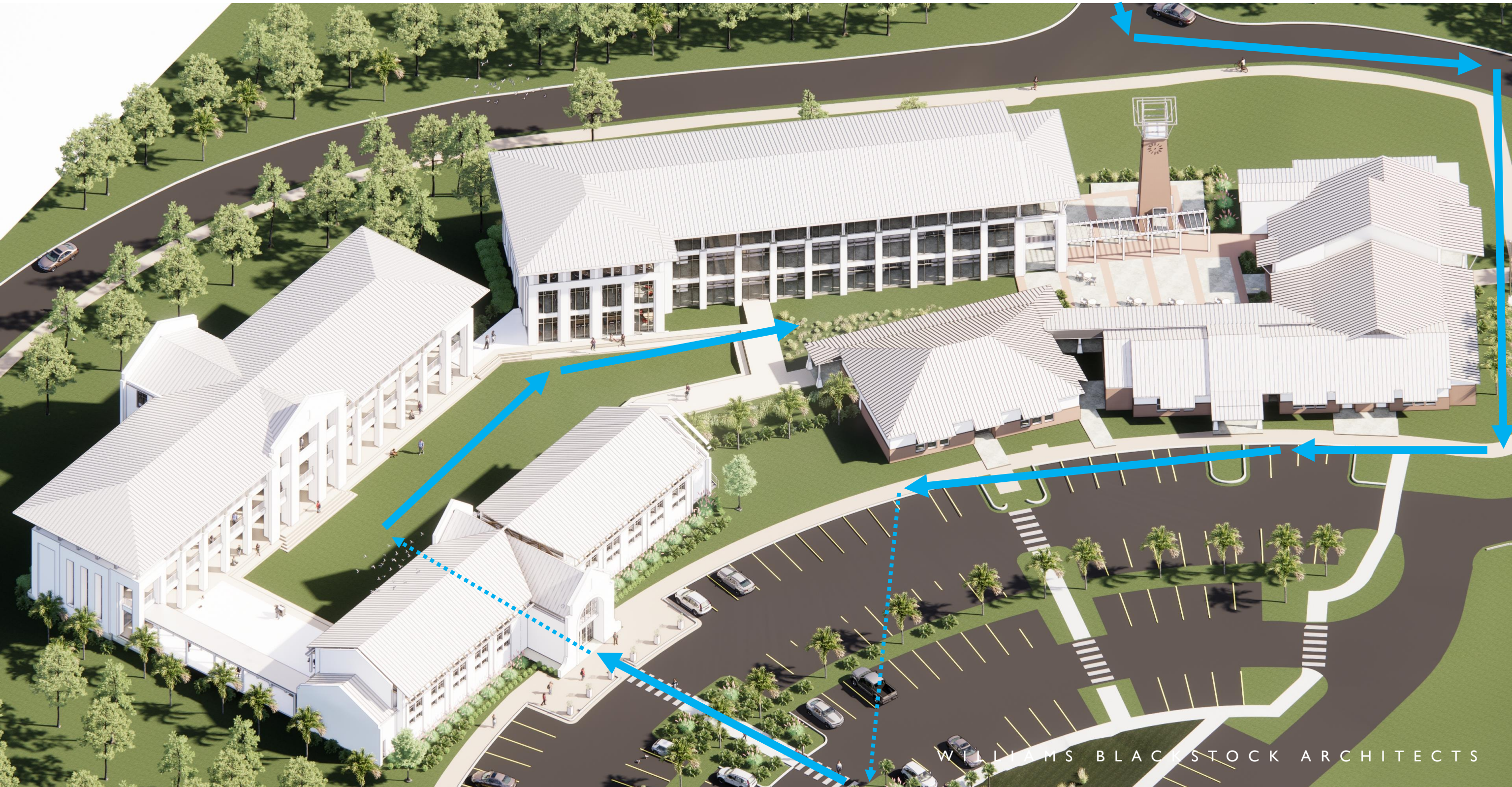
LEVEL 3 - TOTAL SEATS = 89

TOTAL STUDENT SEATS = 89

TOTAL FACULTY SEATS = 0

































































RENDERINGS

GREENSPACE



WILLIAMS BLACKSTOCK ARCHITECTS











